


**A Lange & Söhne Richard Lange Perpetual Calendar Terraluna:** In a first, in a wristwatch (in pink gold or white gold case), this masterpiece features the orbital moon-phase display, which shows the location of the moon relative to the earth and the sun.



**Audemars Piguet Royal Oak Concept GMT Tourbillon:** This timepiece is sculpted in a titanium case with a white ceramic bezel framing the design of the tourbillon carriage and second GMT time-zone display inside. The hourglass-shaped bridge is enlivened by the double symmetry of the tourbillon bridges and GMT display.



**Baume & Mercier Clifton 1892 Flying Tourbillon:** A limited edition of 30 pieces, this watch set in 18K red gold is powered by a manually wound mechanical caliber controlled by a flying tourbillon. With a power reserve of 50 hours, it has a hand-sewn alligator strap.



**Cartier Ballon Bleu Floral-Marquetry Parrot:** Cartier took up a new craft in watchmaking—floral marquetry, which adorns and enlivens the dial of the Ballon Bleu de Cartier watch. This creation with parrot motif and bracelet in white alligator skin is a limited edition of 20 pieces.



**Greubel Forsey The Platinum GMT:** In this timepiece Greubel Forsey has incorporated a terrestrial globe completing each anti-clockwise rotation in 24 hours, the same direction in which our planet spins. This planisphere presents all the global time zones in real time from the perspective of the North Pole.



**Van Cleef & Arpels Midnight Planetarium Poetic Complication:** This timepiece provides a miniature representation of the movement of six planets around the sun and their position at any given time—Earth and Mercury, Venus, Mars, Jupiter and Saturn. Telling the time is by observing the shooting star.



## SUPER SIXTEEN at SIHH 2014

Here's a glimpse of the 16 brands that dazzled at the recently concluded Salon International de la Haute Horlogerie (SIHH) 2014, in Geneva. **Anita Khatri and Ashok Khemlani** report

The SIHH, also, popularly known as the Geneva Watch Fair is an event in every watch enthusiast's diary. The event marks the beginning of the watchmaking year. Raising the curtain on the new objects d'art in fine watchmaking (Haute Horlogerie) year after year, this private and exclusive event, which took place from January 20th-24th, was a grand success. Sixteen of the most prestigious Maisons unveiled their latest products, setting an optimistic tone for 2014. This edition of the salon displayed creativity of extraordinary craftsmanship—Audemars Piguet's Ceramic Tourbillon Concept Watch, Van Cleef & Arpels' Midnight Planetarium Poetic Complication, IWC's Bronze chronograph divers watch, Panerai's Left Handed Luminor 1950-3 day watch, A.Lange & Söhne's Terraluna. From the most simple to the most complicated, the new creations exhibited a perfect blend of traditional and contemporary, thereby reinventing themselves. As fascinating as ever, a large focus was on women's watches—Ballon Bleu de Cartier Floral-Marquetry Parrot Watch, Vacheron Con-

stantin's India-inspired Métiers d'Art Fabuleux Ornaments and more. The SIHH staged an exhibition, Horology, a child of astronomy through which the creativity, culture and history of time measurement were brought to the fore. This exhibition unfolded how watchmakers have succeeded in capturing the infinitely vast within the confines of a timepiece through astronomical complications. "Horology, a child of astronomy, is our tribute to the infinitely vast, which is expressed by particularly ingenious means through horology's infinitely small," said Fabienne Lupo Director of the SIHH.

Most of the brands chose to remain focused to their core and introduced fewer products, while experimenting with serious innovations in the world of complications. Another interesting trend was watches with Moon Phase and complicated watches for women. Innovation with newer material continued to rule.

In the next few editions of DNA of Luxury, we will bring to you the trends in fine watchmaking for 2014.



**Vacheron Constantin Métiers d'Art Fabuleux Ornaments:** This collection of four models celebrates the decorative arts of several cultures—China, India, the Ottoman empire and France. Inspired by Indian manuscripts, it has a Grand Feu champlevé enamelling; and features illustrations through intense enamels surrounding the openworked calibre.




**Roger Dubuis Hommage Double Flying Tourbillon:** A dazzling 28-piece Boutique edition in pink gold, this new masterpiece of the Hommage collection boasts the RD100, a new movement composed of 452 individually hand-finished parts, endowed with a 50-hour power reserve.




**Richard Mille RM 037 Ladies Watch:** This ladies watch is available with 18K red gold caseband with highly scratch resistant ceramic bezels in white or black, or full cases in 18K red or white gold, accompanied by a rich variety of stone setting and dial variants in precious and semi-precious materials such as diamond, onyx, pearl and jasper.




**Ralph Lauren The Stirrup collection:** This collection boasts unique sporting elegance and fine jewellery craftsmanship. The new Petite-Link timepiece adopts the aesthetic of interconnected bracelet links. This watch is in white gold with a full-pavé diamond setting on both, the case and bracelet.



**Piaget The Altiplano 38mm 900P:** This watch with a power reserve of around 48 hours is the world's thinnest mechanical watch at 3.65 mm. The pink gold version, bears anthracite mechanical elements, whereas in the gem-set white gold variation, the bezel lights up the entire creation with its 78 diamonds.



**Parmigiani Fleurier Tonda Metrographe:** This round timepiece for men is asymmetrical and has two different profiles. It embodies the spirit of the world's cities, their inhabitants and the frenetic pace that governs their movements.



**IWC Aquatimer Chronograph edition 'Expedition Charles Darwin':** This bronze model, inspired by the ship made famous by Charles Darwin's expedition, is reiterated in the luminescent coating on the hands, indices and the quarter-hour scale on the internal rotating bezel.



**Jaeger Le Coultre Duometre Unique Travel Time:** This watch in pink gold is the first world-time watch enabling to-the-minute adjustment of the second time zone on all continents and countries regardless of the time difference.



**Montblanc The Meisterstück Heritage collection:** This moon-phase watch shows time with faceted dauphine-shaped hands with silver-white dials. The hour circle combines polished faceted appliques and an applied Roman numeral 'XII' within the classical shape of the case.



**Officine Panerai Luminor 1950 Left-Handed 3 Days:** This timepiece has a winding crown and the crown-protecting device at 9 o'clock, on the left side of the case. The clarity and legibility of the dial are enhanced by its sandwich structure, formed of two superimposed plates that enclose a layer of Super-LumiNova. The hand wound movement is equipped with a power reserve of three days. The watch water-resistant to 100 metres is fitted with a strap of natural, untreated leather, fastened by a brushed steel buckle.



GOT SOMETHING TO SAY? Write to the Editor Amy Fernandes [dnaofluxury@gmail.com](mailto:dnaofluxury@gmail.com), Luxury and International Consultant Anita Khatri [anita.khatri@gmail.com](mailto:anita.khatri@gmail.com)

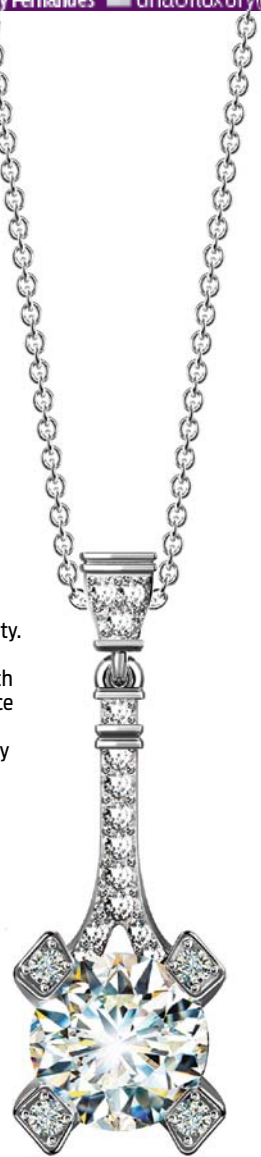
# Luxe Love

Pamper your Valentine with these gorgeous gifts



**Moët and Chandon**  
Raise a toast to love, with Moët and Chandon's 2014 Rose Imperial Tie-for-Two collection. It reinvents the black tie as an elegant stand for a stylish service ritual while experiencing Moët Rose Imperial a deux—a symbol of timeless glamour.

**Fendi**  
The fragrance of Fendi's latest perfume, L'acquarossa, is a declaration of ultra-femininity. The top notes are a blend of bergamot and tangerine; the heart of the perfume throbs with the scent of the lantana flower and the essence of red cedar; musk and patchouli at the base notes confirm a powerfully feminine and highly sophisticated composition with every single note it exudes.



**Forevermark**  
Adorn your beloved with unconditional love and a lifetime promise of togetherness this Valentine's Day with Forevermark diamonds. Walk down the memory lane and cherish the joys of life with sparkling jewellery from Forevermark's Cornerstones™ collection.



**Mirari**  
Gift her these stunning diamond studded earrings, with ruby as the centre stone, on this day of love. It's full of heart and soul.

**Salvatore Ferragamo**  
A unisex fragrance, Tuscan Soul features Sicilian citrus and Calabrian bergamot as top notes. The intensity of orange and magnolia settle in the middle; the base notes of fig tree and Iris flower leave a calming effect. It is recommended for daytime wear.



@RamaSreekant

## What's New

### Taj Khazana

A change in season brings with it a change in fortunes. Taj's in-house lifestyle store, Taj Khazana, has announced a special promotion (up to 50% off) on its exclusive range of saris, stoles, dupattas, home and spa products. This offer, which is valid on select merchandise, has been carefully chosen; the entire range is available across all the Taj Khazana Stores in India till 28th February, 2014. For over three decades now, Taj Khazana has been the patron of traditional craftsmen, weavers, and world-renowned artists. The Taj Khazana stores showcase artefacts and collectibles created by master craftsmen of India as well as a selection of garments, shawls and accessories from handpicked Indian designers. Venue: Taj Khazana at Taj Lands End, Mumbai Time: 10 am-8 pm

